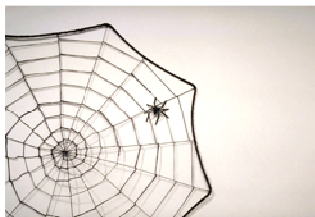

MINUTES OF THE DELFT TC/278 WG3 SG9 MEETING (NeTE_x)



Location	Paris	Date	2014-01-22 & 2014-01-23
Project	NeTE _x		
Subject	SG9		
	Fabrizio Kasia Winfried Christophe Nick Patrik Jan Andrej	Arneodo (5T) Bourée (KBIC) Bruns (VDV) Duquesne (Aurige) Knowles (Steam Intellect) Lorenc (UVT) Tijmensen (InTraffic) Tibaut (University of Maribor)	
Writer	Christophe DUQUESNE (Aurige)		
Main conclusions and important issues			
<ul style="list-style-type: none"> • Part 1 and Part 2 has been adopted, editorial comments have been managed: it has been transmitted to CCMC for official publication • NeTE_x Part 3 work is going on: <ul style="list-style-type: none"> ▪ Document draft is now quite complete, but stil requires some work. ▪ All remaining model issues (except a small one) have been solved. ▪ Part 3 will be finalized under the new EC funding, and should be ready mid 2014 • EC funding has been validated and ther is an ongoing call for experts 			
Next meetings:			
25th & 26th of March 2014 in Cologne		Part 3 – Fare information exchange Start of accompanying work for all parts.	

The presentations are too big to be attached to the minutes' mail. They are temporarily available on the following URL <https://www.dropbox.com/sh/pfv8xpckntsg3o6/CasxoLMRhA>. If they are not available any more, just ask for them by mail to christophe.duquesne@aurigetechnology.com .

Action plan

What	Who	When
Write minutes of the meeting	Christophe Duquesne	ASAP
Send the editorial comments on Figures to Kasia Bourée in order to take them into account in Transmodel 6	Christophe Duquesne	ASAP
Kasia Bourée will update figures of ch 8.2, and Patrick Lorenk will review ch 8.2 (and as much as possible of the following 8.x and 9).	Kasia Bourée Patrick Lorenk	Before next meeting
Provide examples for Part 3	all	ASAP
Add an introduction to chapter 9 to explain why it is a separated chapter.	Nick Knowles	Before final draft
A SALES TRANSACTION FRAME model should be added in the conceptual model (and in the document: fig 287 in v5)	Kasia Bourée	Before final draft
Annexe E (model for Parking Tariff) should not be informative.	Christophe Duquesne	Before final draft
Terms and definitions coming from chapter 5 have to be included in chapter 3:	Andrej Tibaut Jan Tijmensen Christophe Duquesne	Before final draft
Chapter 8.2.1 has to be moved in Use Cases (ch 5).	Andrej Tibaut	Before final draft
Andrej Tibaut will export his BPM model and send it to Christophe Duquesne in order to try to integrate it in the Enterprise Architect model.	Andrej Tibaut Christophe Duquesne	ASAP
Deposit (boarding charge) has to be taken into account in the model: probably through USAGE PARAMETER (CHARGING POLICY usage parameter). Use case will be updated accordingly (if necessary).	Nick Knowles Kasia Bourée Andrej Tibaut	Before next meeting
Package “Product Usage Parameter” should be renamed ‘Eligibility Usage Parameter’ and a “Charging Usage Parameter” package should be added. The document has to be updated accordingly.	Nick Knowles Kasia Bourée Christophe Duquesne	Before next meeting
A table should be added to show on what a Usage Parameter can be applied (FSE, FP, etc.)	Kasia Bourée	Before final draft
A table should be added to explain what a USAGE PARAMETER PRICE is for each USAGE PARAMETER (ch 8.6.1.3)	Nick Knowles	Before final draft
An <i>InterchangeAllowed</i> attribute has to be added to FARE POINT IN JP	Nick Knowles	ASAP
High level uses cases should be added: 1. Create a fare description from scratch (new network) 2. Describe already existing fares	Andrej Tibaut	Before final draft
The first line of each use case has to be updated to only contain the number (#XX), its name being on the “name line”.	Andrej Tibaut Jan Tijmensen	Before final draft

An attribute has to be added to FARE ZONE to distinguish HoneyComb zone from concentric zones or any other kind of zone.	Nick Knowles Kasia Bourée	Before next meeting
Table 55 has to be updated (honeycomb => count crossed zone, concentric=>identify the biggest used zone).	Andrej Tibaut Jan Tijmensen	Before final draft
Check ch 8.2.3.2 consistency with the rest of the document (validity/usage, space or time related, usage limitation...).	Kasia Bourée	Before final draft
Take into account the modelling decision from the meeting (mostly done online: see details in minutes below).	Kasia Bourée	Before next meeting
Some package and schema renaming was done online during the meeting: the document has to be synchronised accordingly.	Christophe Duquesne	Before next meeting
Update conceptual model according to the meeting decisions	Kasia Bourée	ASAP
Review Part 3 terms and definitions	Gustav Thiesing	ASAP
Detailed mapping and a list of possible required enhancements from Flexible transport requirements concerning fares.	Christophe Duquesne	ASAP
Write the first version of a paper explaining why CEN editorial rules have a lot of counterproductive issues when used on IT standard (UML based data model, XML/XSD exchange protocols, etc.) and how to enhance them, and circulate it for additional contributions from the group.	Nick Knowles	ASAP
Walk through the Part 3 UML compositions in order to clean them	Christophe Duquesne	Once the model stabilised

Minutes

A lot of information is available in the associated presentations and documents: these minutes only provides additional informations and main discussed topics.

TOPIC	COMMENTS
General issues	<p><i>All</i></p> <p><i>See Document: NeTEx-Paris-22-23-Jan-2013-CD-Slides v2.ppt</i></p> <p><u>EU funding</u> EU funding had been validated. The expert selection process has been described (<i>see slides</i>).</p> <p><u>Part 1&2</u> The Part 1&2 has been validated, and all comments (from the inquiry and from CEN) have been managed. The final documents have been submitted to CEN and then to CCMC for publication (<i>see slides</i>).</p>

TOPIC	COMMENTS
NeTEx Part 3 Document	<p><i>Christophe Duquesne</i> <i>Andrej Tibaut (use cases)</i></p> <p><i>See Document: NeTEx-Paris-22-23-Jan-2013-CD-Slides v2.ppt</i> <i>prCEN TS 278xxx FV (E)-part 3 – v5.doc</i></p> <p>An important work has been done on the document (from Nick, Kasia and Christophe): the current draft is now covering all the required chapters. But additional work and reviews are still required. With the new EU funding going on, the Part 3 document is now expected mid 2014.</p> <p>Kasia Bourrée will update figures of ch 8.2, and Patrick Lorenk will review ch 8.2 (and as much as possible of the following 8.x and 9).</p> <p>Some of the XSD schemas are not up to date with the last XSD version (NK to update).</p> <p>An introduction should be added to chapter 9 to explain why it is a separated chapter.</p> <p>A SALES TRANSACTION FRAME model should be added in the conceptual model (and in the document: fig 287 in v5).</p> <p>When defining a NeTEx profile, it may be useful to create specific TypeOfFrame. Example will be provided within the work in the EU funding context.</p>

Annexe E (model for Parking Tariff) should not be informative.

Check ch 8.2.3.2 consistency with the rest of the document (validity/usage, space or time related, usage limitation...).

Use Case

Andrej Tibaut has present recent chapter 5 (Use Case) update. Some additional updates were done “live” during the meeting.

At NeTeX use case level we don't need to distinguish between ticketing front and back office.

Terms and definitions coming from chapter 5 have to be included in chapter 3: Andrej and Jan will provide them to Christophe under excel format.

Chapter 8.2.1 has to be moved in Use Cases (ch 5).

Andrej will export his BPM model and send it to Christophe in order to try to integrate it in the Enterprise Architect model.

A walk through uses cases was done in order to make sure we always have the proper corresponding model. A few issues were raised:

- How to model deposit (boarding charge): Nick and Kasia will work on it (USAGE PARAMETER for fixed amount: CHARGING POLICY usage parameter). Use case will be updated accordingly (if necessary).
- Package “Product Usage Parameter” should be renamed ‘Eligibility Usage Parameter’ and a “Charging Usage Parameter” package should be added. The document has to be updated accordingly.
- A table should be added to show on what a USAGE PARAMETER can be applied (FSE, FP, etc.)
- A table should be added to explain what a USAGE PARAMETER PRICE is for each UP (8.6.1.3)
- An *InterchangeAllowed* attribute has to be added to FARE POINT IN JP
- Honeycomb zone are zone with constraints between them (no holes, no overlap) : an attribute has to be added to FARE ZONE to distinguish HoneyComb zone from concentric zones ore any ahter kind of zone. Table 55 has to be updated (honeycomp => count crossed zone, concentric=>identify the biggest used zone).

High level uses cases should be added (corresponding to 2 different workflow):

1. Create a fare description from scratch (new network, etc.)
2. Describe already existing fares

The first line of each use case has to be updated to only contain the number (#XX), its name being on the “name line”.

There is some remaing work to do on Use Cases to fill the “Main Actors”, “Main Objects” and “NeTeX contribution” lines.

Use case Description has to be oriented toward business case, not toward NeTeX solution.

Part 3 use case can refer to Part 1 use case.

TOPIC	COMMENTS
NeTEx Part 3 Model	<p><i>Kasia Bourée</i></p> <p>See Document: <i>DocNeTEx_KB81.docx</i> <i>Attribute Name.doc</i> <i>NeTEx - Model Discussion Delft - notesKB.pptx</i></p> <p>NeTEx should keep IDs as PK (Primary Key) (even if once store in a Database, the implementer can do whatever he wants): this is important at exchange level. It is true that PK usually refers to the database world, and that in NeTEx context it has to be understood as Unique Identifier.</p> <p>GEOGRAPHIC INTERVAL cans count the ZONE/SSP/etc. but doesn't refer them (if it is from ZONE 1 to ZONE 4 it is a DISTANCE MATRIX, if it is 3 ZONES, it is a GEOGRAPHIC INTERVAL ...) => The DISTANCE MATRIX can refer ZONE/SSP... DISTANCE MATRIX and GEOGRAPHIC INTERVAL can be combined through GEOGRAPHIC FACTOR (for example: between ZONE A and B, pay xx € every 3 SSP ...).</p> <p>ACCESS RIGHT PARAMETER ASSIGNMENT should be merged with VALIDITY PARAMETER ASSIGNMENT (check if possible).</p> <p>Some package and schema renaming was done online: the document has to be synchronised accordingly.</p> <p>The GROUP OF DISTANCE MATRIX ELEMENT should be disconnected from ASSIGNEMENT (and reconnect it to FARE STRUCTURE ELEMENT) in order to avoid having the GROUP OF DISTANCE MATRIX ELEMENT in both sides of the ASSIGNEMENT.</p> <p>The PRODUCT ENTITLEMENT diagram has to be separated in conceptual model as in physical.</p> <p>To add a Maximum & Minimum to DISCOUNTABLE RULE (align ϕ / M) as specialisation.</p> <p>USAGE VALIDITY PERIOD has to be used on CAPPING RULE (addition of a relation).</p> <p>Updates will be needed on definitions, but will be done after Gustav's review.</p>

TOPIC	COMMENTS
NeTEx Part 3 Instance diagram	<p><i>Patrick Lorenc</i></p> <p>See Document: <i>attached diagram</i></p> <p>Patrick Lorenc has presented an update of the instance diagram for Berlin's fare.</p>

The DISTANCE MATRIX ELEMENT has to be connected to FARE TABLE or CEL (forget ROW & COLUMN at conceptual level).

In this context the best is probably to have 3 FARE TABLEs (corresponding to columns in the diagram).

Patrik Lorenc will update and circulate the diagram according to the discussion.

The raised issue has to be solved, and a conference call may be organised to solve it if necessary.